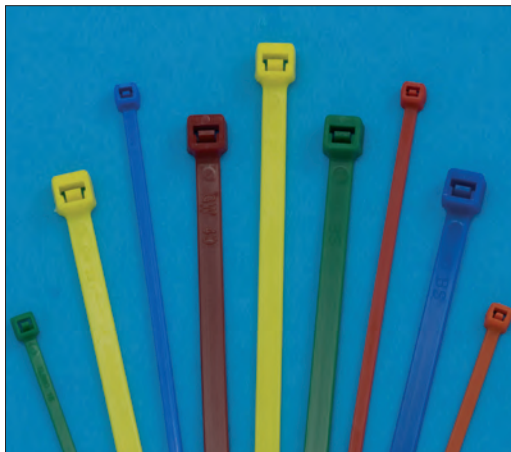


# Cable Ties and Fixings



## Cable Ties and Fixings Introduction



High quality, huge stocks and a massive range of products. Partex cable ties and fixings are there when you need them and at highly competitive prices. Our ties range from tiny 80mm ties used in the electronics industry right up to our giant 1220mm ties for heavy electrical and engineering uses.

The latest additions to our ever increasing range of special purpose ties, fixings and mounts are our new Masonary mounts which make a fast, secure job of fixing cable ties to walls.

We are now also stocking U.V. stabilised ties in 13 sizes. These high performance ties are ideal for outside use in even the most demanding conditions.

Partex are quickly becoming renowned worldwide for our extensive range of Stainless Steel ties. Used in some of the World's most prestigious contracts they have become a byword for their amazing quality and price combination. As well as additional sizes in the standard range, we have introduced lightweight Ladder-type ties, Releasable ties and Red ties for fire and alarm installations.

We can print any of our Nylon cable ties with your unique text, including serial numbering. Please contact Partex for further details.

## Nylon 6.6 Cable Ties: Non-Releaseable

**Specification:****Material:** High quality virgin Nylon 6.6**Flame Resistance:** In accordance with UL94V2**Strength:** Tensile strength MIL 23190 E**Temperature Range:** For continuous use

-40°C to +85°C

**UL:** Approved**Colours:** Natural and Black.**Pack Sizes:** Cable ties up to and including 200mm in length, available in pack sizes of 100 or 1000 pieces. Please specify when ordering. Cable ties over 200mm in length are packed in 100's.

Cable Ties				
Part No.	Length (mm)	Width (mm)	Maximum Bundle Diameter (mm)	Minimum Tensile Strength (KG)
HFC 80	80	2.5	15	8
HFC 100	100	2.5	18	8
HFC 120	120	4.8	24	22
HFC 140	140	3.6	33	18
HFC 160L	160	2.5	40	8
HFC 160	160	4.8	38	22
HFC 200L	200	2.5	50	8
HFC 200I	200	3.6	50	18
HFC 200	200	4.8	50	22
HFC 250	250	4.8	63	22
HFC 300L	300	3.6	76	18
HFC 300	300	4.8	76	22
HFC 365	370	4.8	102	22
HFC 430	430	4.8	110	22
HFC 530	530	4.8	140	22
HFC 150H	150	7.6	36	55
HFC 200H	200	7.6	50	55
HFC 240H	240	7.6	66	55
HFC 300H	300	7.6	76	55
HFC 370H	370	7.6	100	55
HFC 430H	430	9.0	110	75
HFC 530H	530	9.0	140	75
HFC 710H	710	9.0	190	75
HFC 940H	940	9.0	280	75
HFC 1220H*	1220	9.0	365	75
HFC 580EH	580	12.7	152	113

Please specify natural or black when ordering.

\* Only available in black.

Although Nylon cable ties have a wide operating temperature it is not recommended that they should be stored or installed at extremes of temperature.

Please see page 90 for our range of Partex Cable Tie Tension Tools.

## Ultra Violet Resistant Cable Ties

Ultra Violet Resistant Cable Ties: 100 Piece Packs				
Part No.	Length (mm)	Width (mm)	Maximum Bundle Diameter (mm)	Minimum Tensile Strength (KG)
HFC 100 UVB	100	2.5	18	8
HFC 140 UVB	140	3.6	33	18
HFC 160L UVB	160	2.5	40	8
HFC 200I UVB	200	3.6	50	18
HFC 200 UVB	200	4.8	50	22
HFC 300L UVB	300	3.6	76	18
HFC 300 UVB	300	4.8	76	22
HFC 365 UVB	370	4.8	102	22
HFC 530 UVB	530	4.8	140	22
HFC 300H UVB	300	7.6	76	55
HFC 370H UVB	370	7.6	100	55
HFC 710H UVB	710	9	190	75
HFC 1030EH UVB	1030	12.7	302	113

## Coloured Cable Ties



Available in Red, Blue, Green, Brown & Yellow.  
(Please specify colour when ordering)

Coloured Cable Ties: 100 Piece Packs				
Part No.	Length (mm)	Width (mm)	Maximum Bundle Diameter (mm)	Minimum Tensile Strength (KG)
HFC 100	100	2.5	18	8
HFC 140	140	3.6	33	18
HFC 200L	200	2.5	50	8
HFC 200	200	4.8	50	22
HFC 300	300	4.8	76	22

Silver Cable Ties: 100 Piece Packs (Often used to secure wheel trims)				
Part No.	Length (mm)	Width (mm)	Maximum Bundle Diameter (mm)	Minimum Tensile Strength (KG)
HFC 300 SIL	300	4.8	76	22
HFC 365 SIL	370	4.8	102	22

### Printed Cable Ties

We can print any of our Nylon cable ties with your unique text, including serial numbering. Please contact Partex for further details.

## Screw Mountable Cable Ties



- Material Nylon 6.6
- Continuous working temperature: -40°C to +85°C

Screw Mountable Cable Ties: 100 Piece Packs					
Part No.	Size of Screw	Length & Width (mm)	Maximum Bundle Diameter (mm)	Minimum Tensile Strength (KG)	Colour
MT 110	M3	110 x 2.5	18	8	Natural
MT 150	M4	150 x 3.6	32	18	Natural
MT 200	M5	200 x 4.8	50	22	Natural or Black
MT 300	M6	305 x 7.6	76	55	Natural or Black

## Push Mount Cable Ties



Partex Push Mount Cable Ties have an integral mounting device which enable cable to be secured to a panel or chassis without the need for any additional fixing. Two sizes are available, ex-stock, in natural colour only.

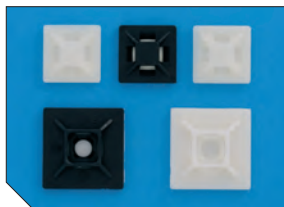
Push Mount Cable Ties: 100 Piece Packs						
Part No.	Length (mm)	Width (mm)	Maximum Bundle Diameter (mm)	Minimum Tensile Strength (KG)	Maximum Panel Thickness (mm)	Nominal Hole Diameter (mm)
PM 150	155	3.3	32	18	2.4	4.7
PM 200	200	4.8	46	22	3.2	6.4

## Metal Barbed Cable Ties



Metal Barbed Cable Ties				
Part No.	Colour	Size mm	Pack Qty	Minimum Tensile Strength (KG)
MB 100 N	Natural	100 x 2.5	1000 (Box)	18
MB 100 B	Black	100 x 2.5	1000 (Box)	18
MB 140 N	Natural	140 x 3.5	1000 (Box)	28
MB 140 B	Black	140 x 3.5	1000 (Box)	28
MB 200 I N	Natural	200 x 3.5	100	28
MB 200 I B	Black	200 x 3.5	100	28
MB 200 N	Natural	186 x 4.5	100	40
MB 200 B	Black	186 x 4.5	100	40
MB 300 N	Natural	290 x 4.5	100	40
MB 300 B	Black	290 x 4.5	100	40
MB 360 N	Natural	360 x 4.5	100	40
MB 360 B	Black	360 x 4.5	100	40

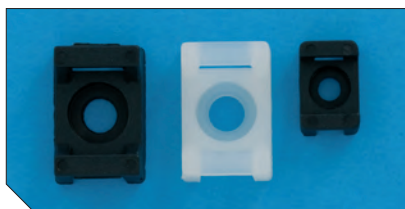
## Cable Tie Bases



The adhesive backing used on our nylon cable tie bases has been tested in the most varied conditions and extreme temperatures. We can therefore confidently recommend their use on most smooth, dry, clean and grease free surfaces. Recommended temperature  $-20^{\circ}\text{C}$  to  $+60^{\circ}\text{C}$ , but it is advised that the bases should not be applied when temperatures are very low. To ensure complete security where excessive stress or vibration is likely to occur, a screw mounting hole is provided on the HFC 2/4. We offer tie bases with entry from four sides, which facilitates error-free mounting. The bases are available in either natural or black. Please specify when ordering.

Cable Tie Bases: 100 Piece Packs				
Part No.	Length (mm)	Width (mm)	Entry	Maximum Tie Width (mm)
HFC 1/4	20	20	4 Way	4.0
HFC 2/4	28	28	4 Way	5.0

## Screw Mountable Saddle Type Mounts



- Material: Nylon 6.6
- Continuous working temperature:  $-40^{\circ}\text{C}$  to  $+85^{\circ}\text{C}$

Screw Mountable Saddle Type Mounts: 100 Piece Packs		
Part No.	For Use With Cable Ties Up To mm Wide	Size of Screw
SM 2	4.8	M4
SM 3	9.0	M5

Available in Black or Natural. Please specify natural or black when ordering.

## Cable Tray Fixing Ties

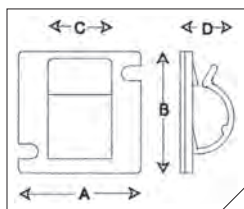
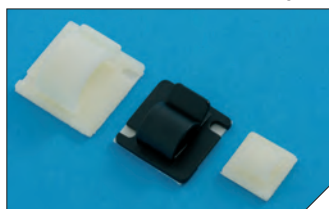


### Product Overview

This simple neat tie provides a permanent answer to the problem of securing cables onto cable trays. The one piece, all plastic moulding, in tough flexible Nylon 6.6, snaps apart to slot into cable trays.

Cable Tray Fixing Ties: 100 Piece Packs					
Part No.	Length (mm)	Strap Length (mm)	Buckle Length (mm)	Strap Width (mm)	Minimum Tensile Strength (KG)
CTF 320	320	270	24	7.6	55

## Self-Adhesive Cable Clips



### Product Overview

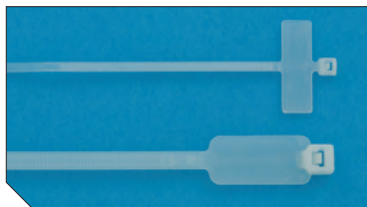
Three sizes of self-adhesive cable clips are available in both natural and black nylon 6.6. The clips are taped singly and packed into polythene bags in 100's.

The adhesive used provides a particularly high level of instant tack, combined with high shear adhesion.

The clips will withstand continuous temperatures of -20°C to +60°C, but it is advised that the clips should not be applied when temperatures are very low.

Self-Adhesive Cable Clips: 100 Piece Packs								
Part No.	Colour	Dimension A (mm)	Dimension B (mm)	Dimension C (mm)	Dimension D (mm)	Min' Bundle (mm)	Max' Bundle (mm)	Screwfix (Optional)
R161N/1	Natural	16	16	10.7	7	4	5	NA
R161B/1	Black	16	16	10.7	7	4	5	NA
R251N/1	Natural	25	25	12.7	10.9	8	13	2 x M3
R251B/1	Black	25	25	12.7	10.9	8	13	2 x M3
R281N/1	Natural	28	28	14	16	12	18	2 x M3
R281B/1	Black	28	28	14	16	12	18	2 x M3

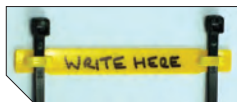
## Marker Ties



- Partex Marker Ties provide a quick and effective method of securing and marking bundles of cables. They can also be used for component marking and pipe identification. Markings can be made with the Partex Marker Pen. Marker ties are available in natural colour, the MAR200W is also available in yellow.

Marker Ties: 100 Piece Packs					
Part No.	Length (mm)	Width (mm)	Maximum Bundle Diameter (mm)	Minimum Tensile Strength (KG)	Marking Area (mm)
MAR 100F	100	2.5	18	8	25 x 8
MAR 110F	110	2.5	50	8	25 x 8
MAR 200W	200	4.6	50	22	28 x 13

## Identification Tags



- Used with cable ties up to and including 4.8mm wide (ordered separately).

Identification Tags Yellow: 100 Piece Packs	
Part No.	Writable Length mm
TIE TAG 60 YELLOW	27
TIE TAG 82 YELLOW	50
TIE TAG 110 YELLOW	75
TIE TAG 152 YELLOW	117

Identification Tags White: 100 Piece Packs	
Part No.	Writable Length mm
TIE TAG 60 WHITE	27
TIE TAG 82 WHITE	50
TIE TAG 110 WHITE	75
TIE TAG 152 WHITE	117

## Indelible Marker Pen



- Black Ink

Indelible Marker Pen	
Part No.	Qty
TIE PEN	1

## Masonry Mounts



- Black. Nylon 6.6. Suitable for cable ties up to 9mm wide for putting into a 6 or 7mm hole drilled into a solid wall.

Masonry Mounts: 100 Piece Packs			
Part No.	Max Tie Width mm	Hole Size mm	
MM6	9.0	6	
MM7	9.0	7	

## Stainless Steel Cable Ties

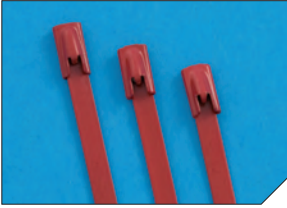


### Product Overview - Stainless Steel Roller Ball Cable Ties

- Self locking design for fast and secure installation.
- Available in both uncoated and pure polyester coated 316 stainless steel.
- Smooth internal surface, suitable for all types of cable installation.
- Exceptional Partex quality coupled with outstanding prices.
- For even faster and neater installations use the Partex SSTG tool. The tool will correctly tension the ties and automatically cut off the tail when this is achieved.
- Det Norske Veritas Type Approval number E-6729.
- UL listed. File number E227552.

Stainless Steel Cable Ties - Roller Ball Type					
Part No.	Description	Size (mm)	Maximum Bundle Diameter (mm)	Pack Qty	Minimum Loop Tensile Strength (N)
SST1316	Uncoated Cable Ties	150 x 4.6	37	100	667
SST2316	Uncoated Cable Ties	201 x 4.6	50	100	667
SST3316	Uncoated Cable Ties	259 x 4.6	69	100	667
SST3816	Uncoated Cable Ties	300 x 4.6	85	100	667
SST4316	Uncoated Cable Ties	360 x 4.6	100	100	667
SST5316	Uncoated Cable Ties	520 x 4.6	150	100	667
SST6316	Uncoated Cable Ties	680 x 4.6	200	100	667
SST2316H	Uncoated Cable Ties	200 x 7.9	50	100	1335
SST3816H	Uncoated Cable Ties	300 x 7.9	85	100	1335
SST4316H	Uncoated Cable Ties	360 x 7.9	100	100	1335
SST5316H	Uncoated Cable Ties	520 x 7.9	150	100	1335
SST6316H	Uncoated Cable Ties	680 x 7.9	200	100	1335
SSTC1316	Coated Cable Ties	150 x 4.6	37	100	667
SSTC2316	Coated Cable Ties	201 x 4.6	50	100	667
SSTC3316	Coated Cable Ties	259 x 4.6	69	100	667
SSTC3816	Coated Cable Ties	300 x 4.6	85	100	667
SSTC4316	Coated Cable Ties	360 x 4.6	100	100	667
SSTC5316	Coated Cable Ties	520 x 4.6	150	100	667
SSTC6316	Coated Cable Ties	680 x 4.6	200	100	667
SSTC2316H	Coated Cable Ties	200 x 7.9	50	100	1335
SSTC3316H	Coated Cable Ties	259 x 7.9	200	100	1335
SSTC3816H	Coated Cable Ties	300 x 7.9	50	100	1335
SSTC4316H	Coated Cable Ties	360 x 7.9	100	100	1335
SSTC5316H	Coated Cable Ties	520 x 7.9	150	100	1335
SSTC6316H	Coated Cable Ties	680 x 7.9	200	100	1335

## Red Coated Stainless Steel Cable Ties



Red Coated Stainless Steel Roller Ball Cable Ties					
Part No.	Description	Size (mm)	Maximum Bundle Diameter (mm)	Pack Qty	Minimum Loop Tensile Strength (N)
SSTRC2316	Red Coated Cable Ties	201 x 4.6	50	100	667
SSTRC4316	Red Coated Cable Ties	360 x 4.6	100	100	667

## Automatic Stainless Steel Cable Tie Tensioning Tool - SSTG



### Product Overview

- The SSTG tool can be used with any of the Partex stainless steel roller ball ties including the coated range.
- High quality construction for a long service life.
- For even faster and neater installations use the Partex SSTG automatic tool when securing your Partex roller ball ties. The tool will correctly tension the ties and automatically cut off the tail when this is achieved.

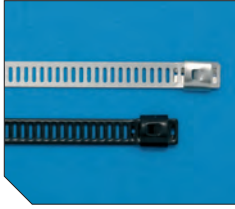
## Stainless Steel Cable Tie Application Tool - SSAT



### Product Overview

- Heavy duty, two-stage, manual tensioning tool.
- For high volume applications.
- High-strength construction for long life.
- Neat cutting.
- Easy to use providing strong, secure, fixing of steel ties.
- For use with all Roller Ball ties.

## Ladder Type Stainless Steel Cable Ties

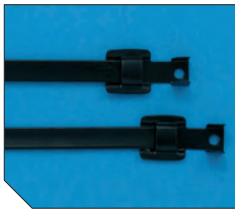


### Product Overview

- Available in both uncoated and pure polyester coated 316 stainless steel.

Ladder Type Stainless Steel Cable Ties					
Part No.	Description	Size (mm)	Maximum Bundle Diameter (mm)	Pack Qty	Minimum Loop Tensile Strength (N)
SSLT2316	Uncoated Ladder Tie	200 x 7	50	100	667
SSLT3316	Uncoated Ladder Tie	250 x 7	65	100	667
SSLT3816	Uncoated Ladder Tie	300 x 7	82	100	667
SSLT4316	Uncoated Ladder Tie	360 x 7	100	100	667
SSLT4816	Uncoated Ladder Tie	450 x 7	130	100	667
SSLTC2316	Coated Ladder Tie	200 x 7	50	100	667
SSLTC3316	Coated Ladder Tie	250 x 7	65	100	667
SSLTC3816	Coated Ladder Tie	300 x 7	82	100	667
SSLTC4316	Coated Ladder Tie	360 x 7	100	100	667
SSLTC4816	Coated Ladder Tie	450 x 7	130	100	667

## Releasable Type Stainless Steel Cable Ties



### Product Overview

- 316 grade stainless steel ties available in both pure polyester and PPA (performance polymer alloy) coatings. PPA is a non-toxic, halogen free and low smoke material.

Releasable Type Stainless Steel Cable Ties					
Part No.	Description	Size (mm)	Pack Qty	Minimum Loop Tensile Strength (N)	
RSST - PP150	Pure Polyester Coated Releasable Tie	150 x 6.35	100	1334	
RSST - PP229	Pure Polyester Coated Releasable Tie	229 x 6.35	100	1334	
RSST - PP305	Pure Polyester Coated Releasable Tie	305 x 6.35	100	1334	
RSST - PP457	Pure Polyester Coated Releasable Tie	457 x 6.35	100	1334	
RSST - PPA150	PPA Coated Releasable Tie	150 x 6.35	100	1334	
RSST - PPA229	PPA Coated Releasable Tie	229 x 6.35	100	1334	
RSST - PPA305	PPA Coated Releasable Tie	305 x 6.35	100	1334	
RSST - PPA457	PPA Coated Releasable Tie	457 x 6.35	100	1334	
RSST - PPA457HD	PPA Coated Releasable Tie	457 x 9.53	100	2000	